

2-POST RELAY RACKS



Whether working with a wiring closet, telecom room, or data center, the Kendall Howard 2-Post Relay Rack is the ideal racking solution. Its sturdy construction makes a rigid, reliable rack that can hold up to 800 lbs. of equipment, including switches, patch panels, UPS's, rack shelves, rackmount keyboard trays, and more. The rack features four 1/4-20 x 0.5" grounding studs on the inside of the rails that allow you to ground your equipment directly to those studs. Also included with the rack are serrated tooth washers that, when tightened, dig in and remove paint from the rack, establishing electrical continuity throughout the rack. When multiple 2-Post Relay Racks are needed, simply gang them together with the ganging holes on both sides of the frame. You can even gang both the 24U and 45U size racks together because the holes align. Cable pass through slots are also included on the frames to allow cabling to pass through between racks. The completely open top design allows the 2-Post Relay Rack to accept cable bundles. It also makes the rack compatible with most ladder racks and coordinating accessories. When you need a 2-post rack that offers both strength and dependability, there is none other than the 2-Post Relay Rack.

FEATURES

Durability - The 2-Post Relay Rack's welded L-bracket base and cold rolled steel design forms a sturdy, reliable rack. To maintain its weight capacity, the rack must be bolted or secured to the floor. We always recommend installing your heaviest equipment at the lowest points on the rack.

Gangable - Ganging holes on both sides of the rack make it easy to gang and secure multiple racks together. The sides also feature cable pass through holes to allow cabling to pass from one rack to the next.

Electrical Grounding - The rack features four 1/4-20 x 0.5" grounding studs on the inside of the rails. These studs allow you to ground your equipment directly to the stud or with the use of bus bars, not included. The rack also includes serrated tooth washers to allow the frame to be grounded during the assembly process.

Open Top Design - The 2-Post Relay Rack's completely open top allows for large smaller cabling, and makes the rack compatible with most ladder racks and accessories.



- 10-32 tapped rails
- Includes 25 10-32 rack screws
- Includes four 1/4-20 grounding studs
- Gangable
- Ships knocked down
- 800 lb. weight capacity
- 19" EIA compliant
- Made in the USA
- Limited Lifetime Warranty



SPECIFICATIONS

Size	24U	45U
Part Number	1911-3-200-24	1911-3-200-45
Width	20.81"	20.81"
Depth	15.04"	15.04"
Height	47.37"	84.12"
UPC	879447005622	879447005639
Warranty	Limited Lifetime Warranty	Limited Lifetime Warranty
Shipping Method	FedEx Ground	FedEx Ground

2-POST RELAY RACK SPECIFICATIONS & SPECIAL FEATURES



24U 2-Post Relay Rack

- SKU: 1911-3-200-24
- Dimensions: 20.81" x 15.04" x 47.37"
- Product Weight: 25.00 lbs.
- Shipping Weight: 29.00 lbs.
- Weight Capacity: 800 lbs.
- Material: Cold Rolled Steel
- Color: Black Powder Coated Finish

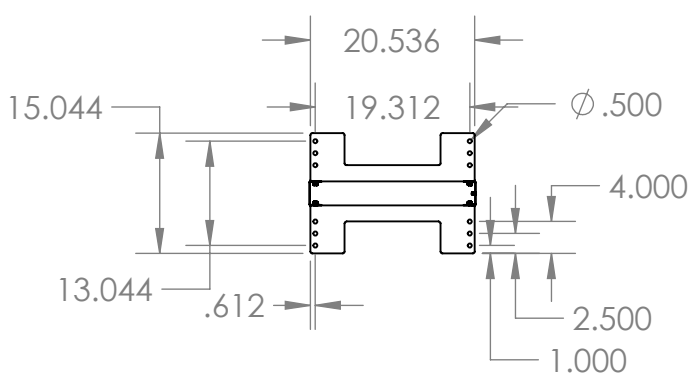
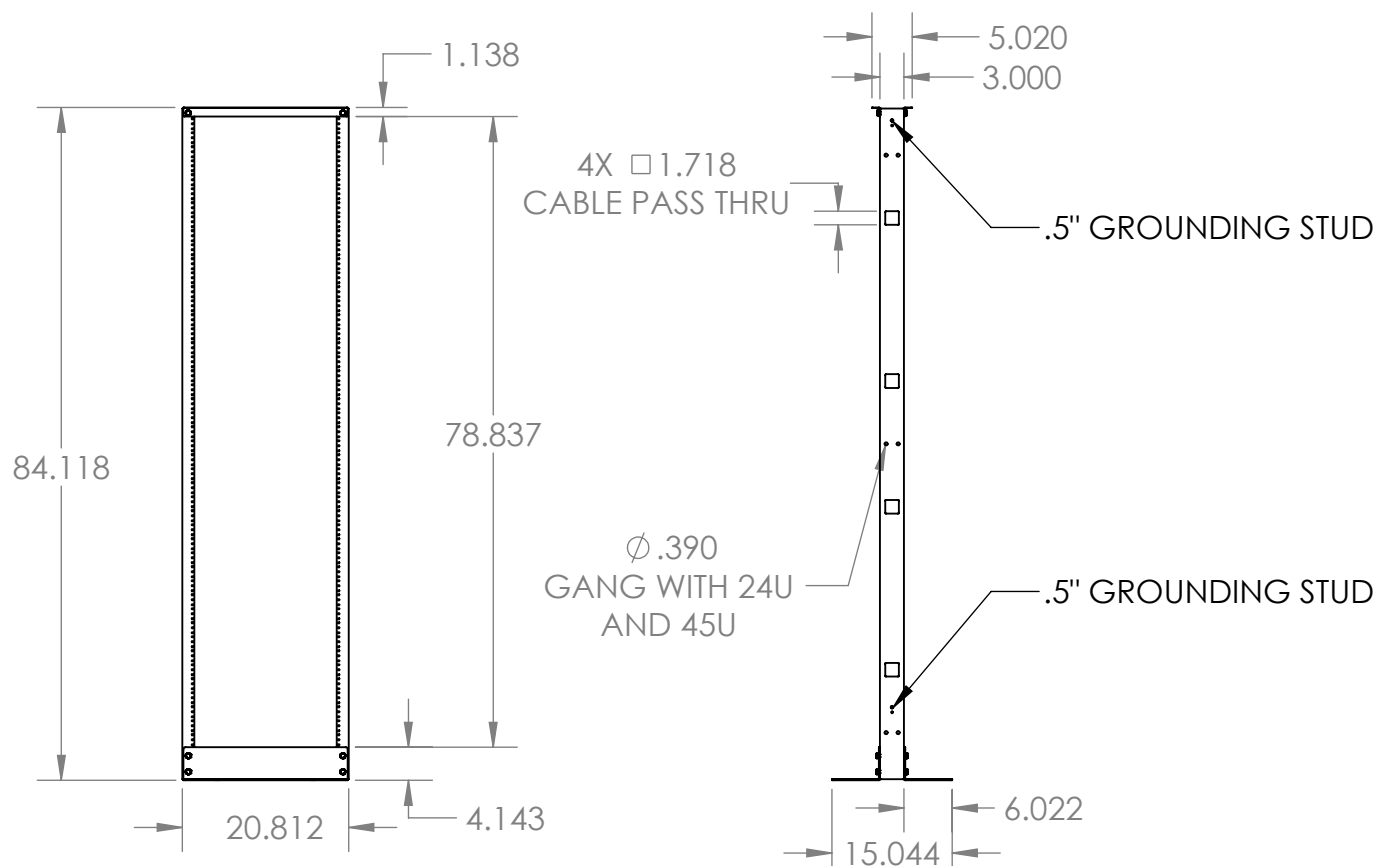
45U 2-Post Relay Rack

- SKU: 1911-3-200-45
- Dimensions: 20.81" x 15.04" x 84.12"
- Product Weight: 36.00 lbs.
- Shipping Weight: 40.00 lbs.
- Weight Capacity: 800 lbs.
- Material: Cold Rolled Steel
- Color: Black Powder Coated Finish



Both sizes include:

- Two Rails (24U or 45U)
- Two L Bases
- Two Upper Support Brackets
- 25 10-32 Rack Screws
- Four 1/4-20 Grounding Studs
- Assembly Hardware Pack



- NOTE:
1. 19" EIA RACK MOUNT COMPLIANT.
 2. RAILS ACCEPT 10-32 RACK SCREW.
 3. BLACK POWDER COAT.

WEB PRINT

PROPRIETARY AND CONFIDENTIAL
THE INFORMATION CONTAINED IN THIS DRAWING IS THE SOLE PROPERTY OF KENDALL HOWARD. ANY REPRODUCTION IN PART OR AS A WHOLE WITHOUT THE WRITTEN PERMISSION OF KENDALL HOWARD IS STRICTLY PROHIBITED.

NEXT ASSY		USED ON	FINISH
CATEGORY:		DO NOT SCALE DRAWING	

UNLESS OTHERWISE SPECIFIED:
DIMENSIONS ARE IN INCHES
TOLERANCES:
FRACTIONAL: NA
ANGULAR: BEND: NA
TWO PLACE DECIMAL: NA
THREE PLACE DECIMAL: NA
HOLES: NA

	NAME	DATE
DRAWN		
CHECKED		
ENG APPR.		
MFG APPR.		
Q.A.		
COMMENTS:		

KENDALL HOWARD

TITLE:
45U 2-POST RELAY RACK

SIZE	DWG. NO.	REV
A	1911-3-200-45 WP	1
SCALE: 1:24	WEIGHT: 34.64	SHEET 1 OF 1